

How To Create A 3G Dial-up Connection in Windows XP

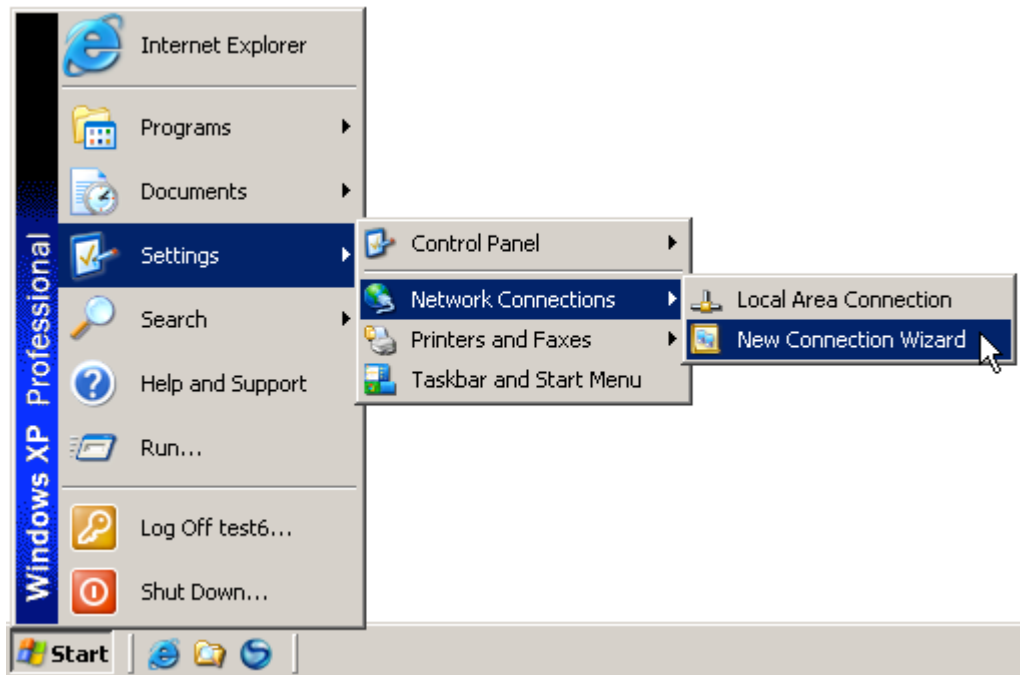
This guide shows how to create a 3G dial-up connection. Confirm that the card drivers are properly installed on your system.

1) Insert your PCMCIA card into the PCI slot on your computer.
Note: If using an express PCMCIA card use the correct adapter, unless your computer is equipped with an express card slot.

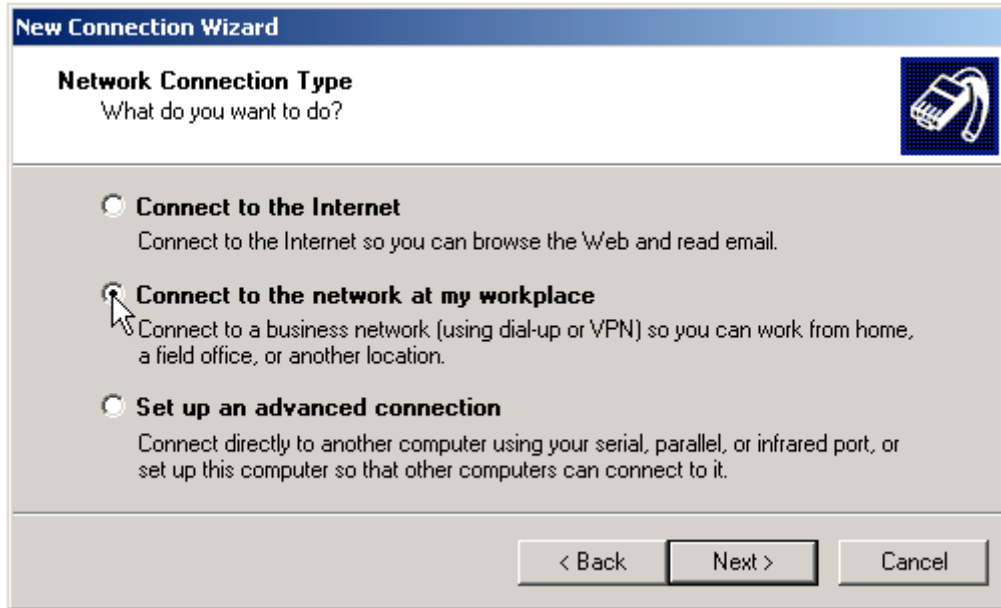
2) In the Windows XP Start menu, navigate to

Settings → Network Connections → New Connection Wizard

to open the New Connection Wizard.



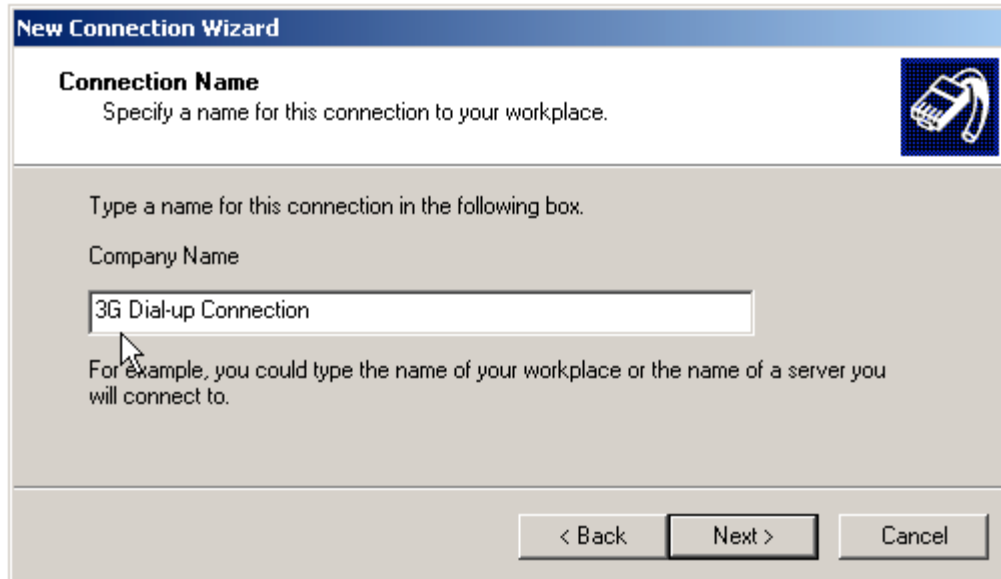
- 3) Once the New Connection Wizard is open, click Next. On the following screen, choose “Connect to the network at my workplace” and click Next.



- 4) Choose “Dial-up connection” and click Next.



- 5) On the following screen, enter a name for the 3G dial-up connection (for example, "3G Dial-up Connection") and click Next.



The screenshot shows a window titled "New Connection Wizard" with a blue header bar. Below the header, the title "Connection Name" is displayed in bold, followed by the instruction "Specify a name for this connection to your workplace." A small icon of a mobile phone is in the top right corner. The main area contains the text "Type a name for this connection in the following box." and "Company Name" above a text input field. The input field contains the text "3G Dial-up Connection". Below the input field, there is a mouse cursor and the text "For example, you could type the name of your workplace or the name of a server you will connect to." At the bottom of the window, there are three buttons: "< Back", "Next >", and "Cancel".

- 6) Enter the correct dial string in the Phone Number field, and click Next.

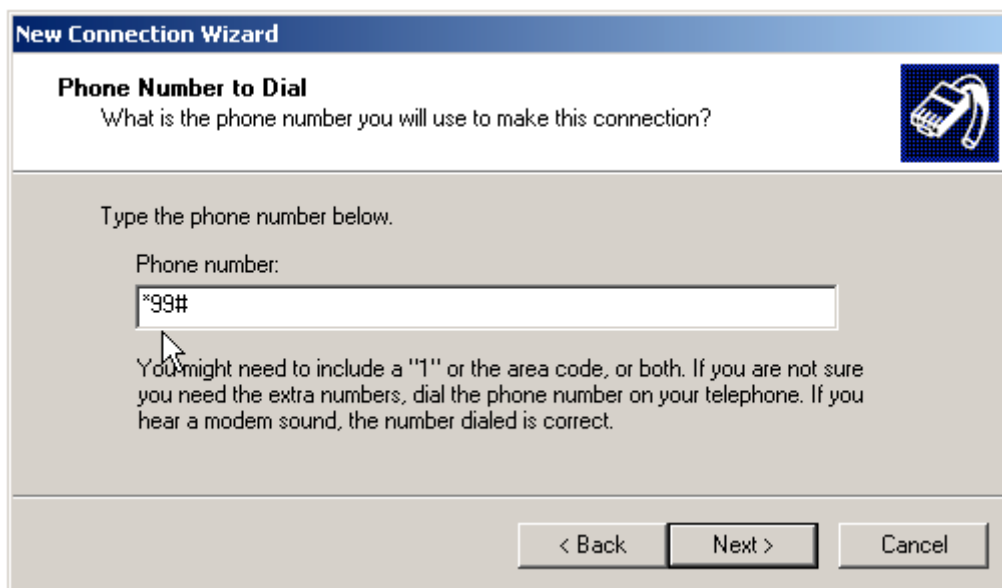
Cingular: *99# (shown in image)

Sprint: #777

Verizon: #777

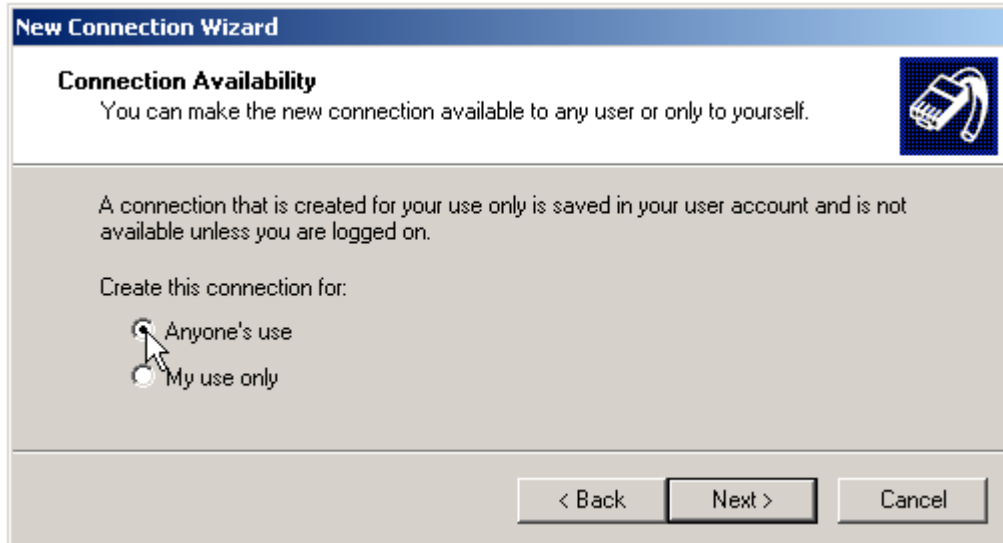
T-Mobile: *99***#

Note for APNs, Usernames, and Passwords refer to page 6 of manual.



The screenshot shows a window titled "New Connection Wizard" with a blue header bar. Below the header, the title "Phone Number to Dial" is displayed in bold, followed by the instruction "What is the phone number you will use to make this connection?" A small icon of a mobile phone is in the top right corner. The main area contains the text "Type the phone number below." and "Phone number:" above a text input field. The input field contains the text "*99#". Below the input field, there is a mouse cursor and the text "You might need to include a '1' or the area code, or both. If you are not sure you need the extra numbers, dial the phone number on your telephone. If you hear a modem sound, the number dialed is correct." At the bottom of the window, there are three buttons: "< Back", "Next >", and "Cancel".

- 7) Choose between the “Anyone’s use” and “My use only” options. The “Anyone’s use” option creates the 3G Dial-up Connection to be seen by all computer users. The “My use only” option creates the connection only for the current user.



When finished, click Next.

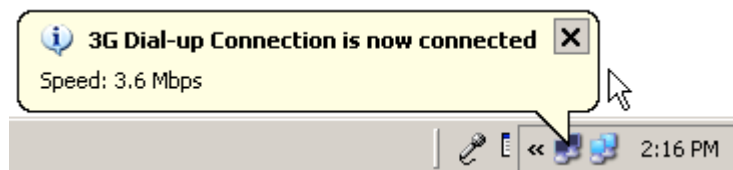
- 8) For added convenience, check the “Add a shortcut to this connection to my desktop” option.
To create the connection and close the New Connection Wizard, click Finish.



- 9) In the connection window that appears after you click Finish, leave the User name and Password fields blank. Confirm that the dialed number is already in the Dial field, and click the Dial button.



- 10) When the confirmation bubble appears in the system tray at the bottom-right of the screen, you are connected to the 3G Dial-up connection.



To open the connection window later, use the recently created desktop shortcut or navigate to Start → Settings → Network Connections → 3G Dial-up Connection.



North American carrier settings:

Cingular

APN: isp.cingular

Dial number: *99#

Username: isp@cingulargprs.com

Password: CINGULAR1

T-Mobile

APN: wap.voicestream.com

Dialed number: *99***#

Sprint:

Dialed number: #777

Verizon:

Dialed number: #777